

Frequently Asked Questions

How do you promote your event?

You can promote your event using social media, email, posters (printed out or digital), and even word-of-mouth. You can use our [marketing resources](#) to find and use specific assets to personalise to promote your Get Online Week event.

Our [eventholder toolkit](#) also has social media templates and images for you to share!

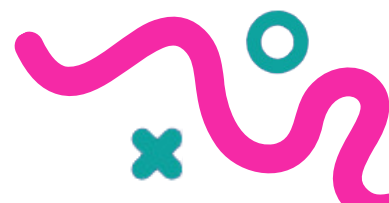
Make sure you share your event with local partners and make it easy for them to signpost or make referrals. You could also drop in to existing groups, e.g. Knit and Natter, to promote your event directly to the people you're trying to reach.

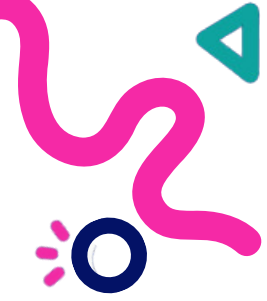
What types of "hook" work for an event?

Refreshments are great hooks for events and can help make events feel more warm and welcoming. Easy ideas are snacks like biscuits, tea, juice, etc.

Do we have to register attendees on Learn My Way?

No, you don't have to register attendees on Learn My Way, but it would be great if you did! Learn My Way is a great tool for beginners to learn basic digital skills in an easy and accessible way. We're also running a prize draw for hubs that support people to register and complete topics using Learn My Way.





Frequently Asked Questions

When will we receive promotional packs?

If you requested posters and flyers, they will be with you the week commencing **30th September**.

Hubs that requested merch packs will be receiving packages **by 11th October** if not sooner so that you can use them during your events.

If you weren't able to register in time to receive these packs, you can use our digital assets to promote your events.

When will we receive vouchers?

The vouchers have now been sent out so you should receive them in the next couple of days.

We're only able to offer one promo pack, merch pack and voucher per organisation.

When will my event appear on the map?

Events are updated at the beginning of every week, so it might take a few days to show up after you register.

Can we hold an event outside of Get Online Week?

You can hold an event whenever you'd like but it won't be displayed on the map as it's not happening throughout the week.

